



Intro

RIPng

PIM-DM

Outro

IPv6 UNICAST AND IPv4 MULTICAST ROUTING IN OMNET++

Vladimír VESELÝ,
Ondřej RYŠAVÝ, Miroslav ŠVÉDA



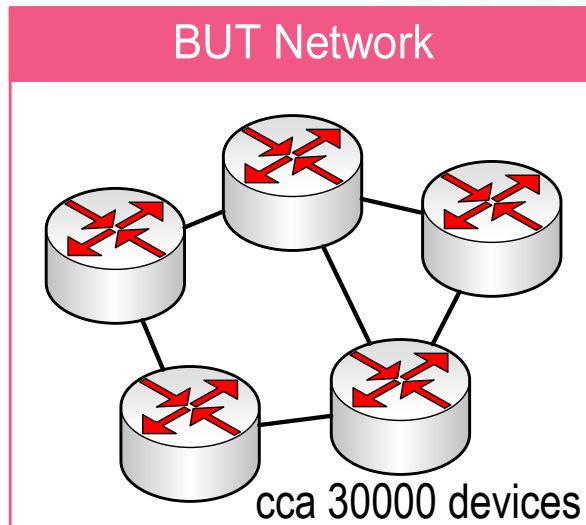
MOTIVATION

Intro

RIPng

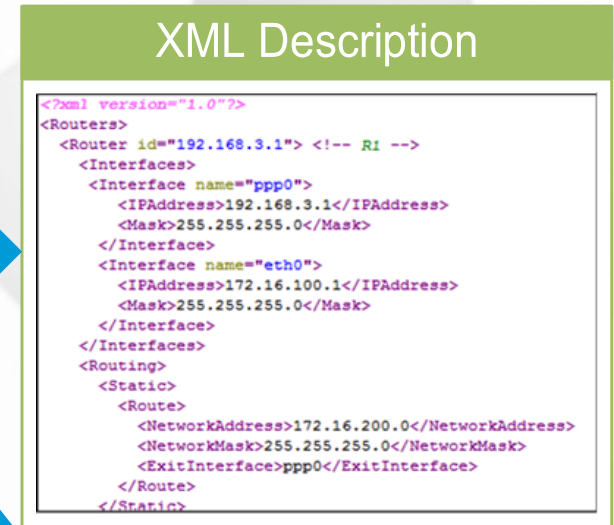
PIM-DM

Outro

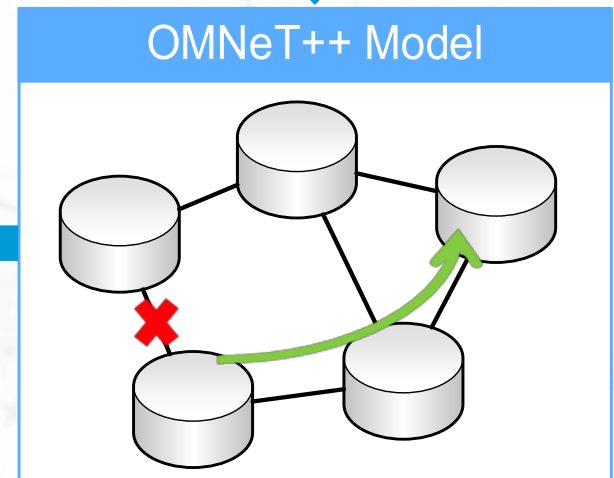


Running configs

SNMP

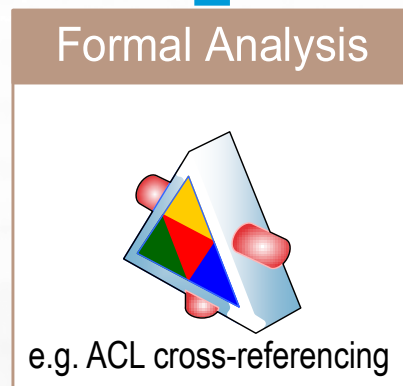


Create model



Topology configuration

Improvements



Simulation

results



CONTRIBUTION

- ◆ Extending functionality of the INET framework
 - ◆ IP based wired networks and protocols

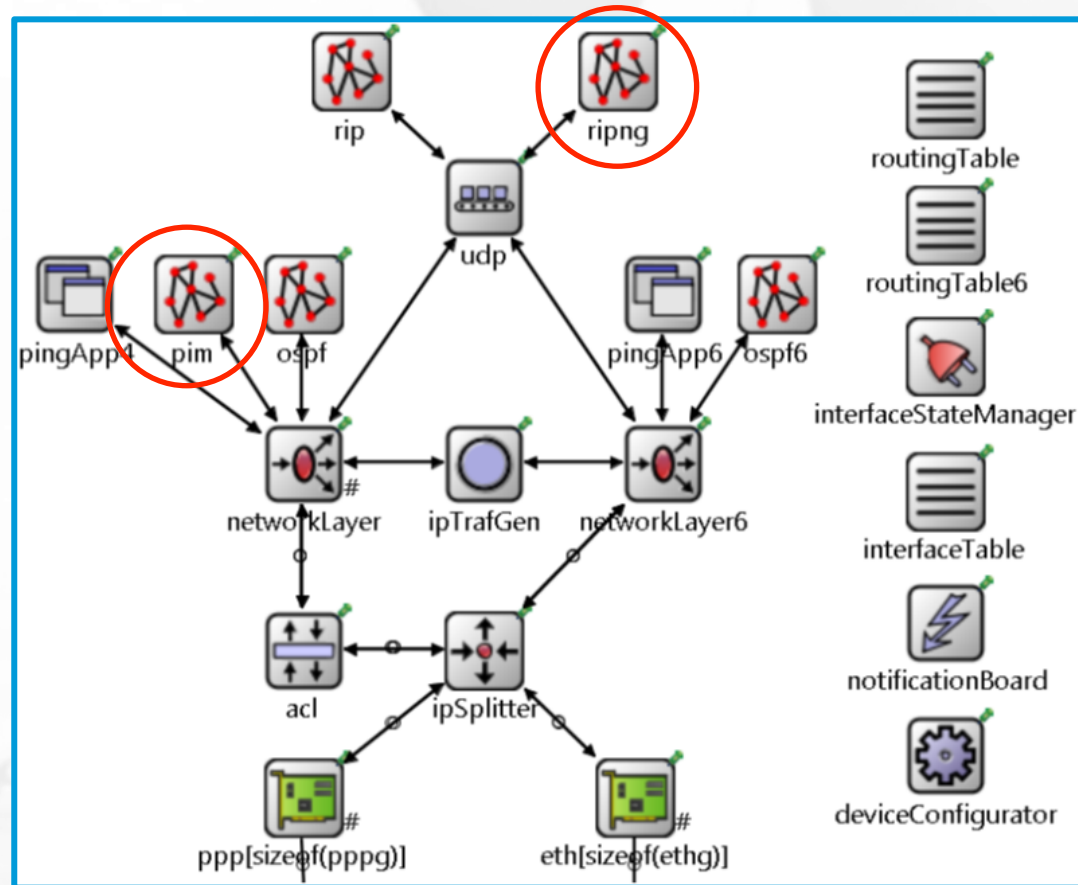
Intro

RIPng

PIM-DM

Outro

- ◆ Unicast routing
 - ◆ RIPv2
 - ◆ RIPng
 - ◆ OSPF v2
 - ◆ ISIS
- ◆ QoS
 - ◆ DSCP
 - ◆ Queues
- ◆ Multicast
 - ◆ IGMP/MLD
 - ◆ PIM-DM



ANSARouter compound module inspired by Cisco



BASIC INFO

- ◆ IPv6 twin of **distance vector** RIPv2
- ◆ **Hop count** as the metric (15 max, 16 unreachable)
- ◆ Destination address FF02::9, destination UDP port 521
- ◆ Split-horizon rule to prevent counting to infinity
- ◆ Bellman-Ford algorithm
- ◆ RIPng Request
RIPng Response
messages:

```
// RIPng command
enum RIPngCommand
{
    RIPngRequest = 1;
    RIPngResponse = 2;
}

// Routing table entry structure
class RIPngRTE
{
    IPv6Address IPv6Prefix; //128 bytes
    uint16_t routeTag; //2 bytes
    char prefixLen; //1 byte
    char metric; //1 byte
}

// Represents a RIPng message
packet RIPngMessage
{
    char command enum(RIPngCommand); //1 byte
    char version = 1; //1 byte
    uint16_t mustBeZero = 0; //2 bytes
    RIPngRTE rtes[]; //RTE
}
```

RIPng OMNeT++ MSG structure

Intro

RIPng

PIM-DM

Outro



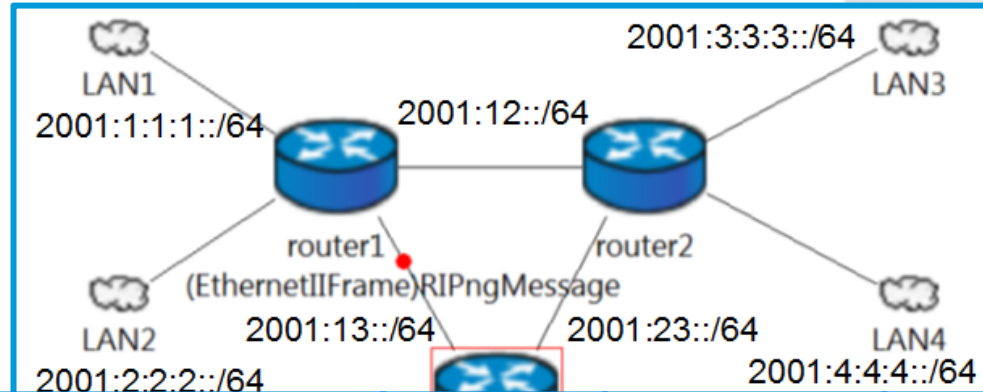
VERIFICATION

Intro

RIPng

PIM-DM

Outro



Message	Sender	Simul. [s]	Real [s]
RIPng Request	R1	0.000	0.000
RIPng Response	R1	0.000	0.321
RIPng Request	R2	0.001	0.620
RIPng Response	R1	0.001	0.640
RIPng Response	R2	211.000	211.888

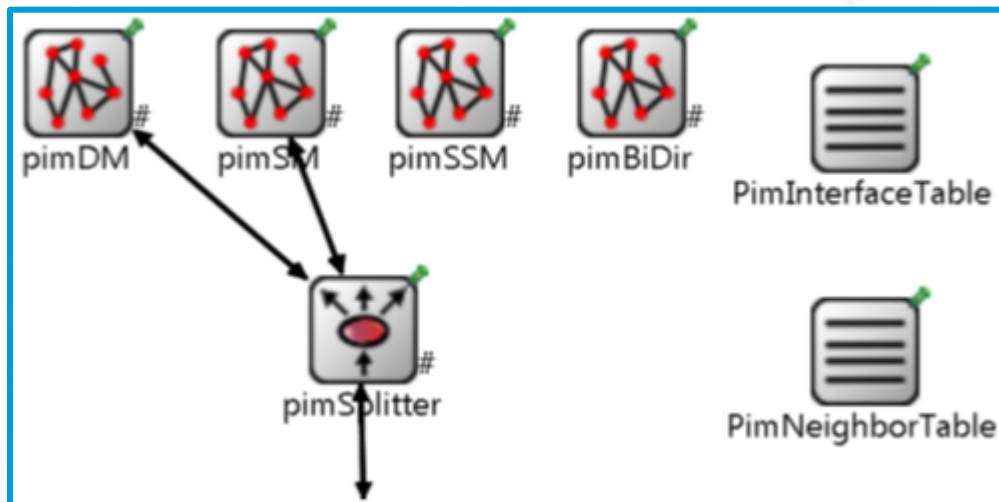
```

[0] = ROUTING_PROT 2001:12::/64 [120/2] via fe80::8aa:ff:fe00:2, eth0
- [1] = ROUTING_PROT 2001:1:1:1::/64 [120/2] via fe80::8aa:ff:fe00:2, eth0
- [2] = ROUTING_PROT 2001:2:2:2::/64 [120/2] via fe80::8aa:ff:fe00:2, eth0
- [3] = ROUTING_PROT 2001:3:3:3::/64 [120/2] via fe80::8aa:ff:fe00:6, eth1
- [4] = ROUTING_PROT 2001:4:4:4::/64 [120/2] via fe80::8aa:ff:fe00:6, eth1
- [5] = STATIC 2001:13::/64 [1/10] via <unspec>, eth0
- [6] = STATIC 2001:5:5:5::/64 [1/10] via <unspec>, eth2
- [7] = STATIC 2001:6:6:6::/64 [1/10] via <unspec>, eth3
- [8] = STATIC 2001:23::/64 [1/10] via <unspec>, eth1
  
```



BASIC INFO

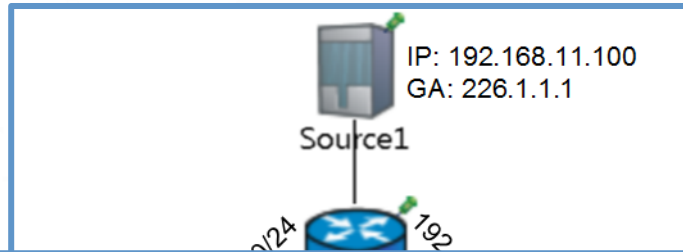
- ◆ Independent on unicast routing protocol
- ◆ Uses **source trees** to describe path from sender to receiver(s)
 - ◆ Incoming RPF interface
 - ◆ Outgoing interface list
- ◆ Simple “flood and prune” mechanism...
- ◆ ...but with complex signalization (plenty of messages)



Structure of PIM module



VERIFICATION



```
showMRoute (std::vector<std::string>)  
showMRoute[2] (std::string)  
[0] = (192.168.11.100, 226.1.1.1), flags: C  
Incoming interface: eth0, RPF neighbor 192.168.12.1  
Outgoing interface list:  
eth2, Forward/Dense  
[1] = (192.168.33.100, 226.2.2.2), flags: P  
Incoming interface: eth0, RPF neighbor 192.168.12.1
```

Message	Sender	Simul. [s]	Real [s]
PIM Hello	R1	30.435	25.461
PIM Prune/Join	R3	87.000	87.664
PIM Graft	R2	144.000	144.406
PIM Graft-Ack	R1	144.000	144.440
PIM Prune/Join	R2	366.000	364.496

Intro

RIPng

PIM-DM

Outro



CONCLUSION

- ◆ “Not just merely” code contribution...
 - ◆ ...so far our simulation models work fine (proved by enterprise)
 - ◆ ...more interesting simulations benefiting our extensions will follow

- ◆ Near future
 - ◆ wrap PIM-SM and ISIS
 - ◆ FHRP
 - ◆ OSPFv3

- ◆ More distant near future 😊
 - ◆ RINA
 - ◆ LISP ITR Map Cache synchronization problem
 - ◆ EIGRP (yes, Cisco published specs via IETF)



THE END

Intro

RIPng

PIM-DM

Outro

◆ *Feel free to ask any question...*

◆ Why are there no mentions about other OMNeT++ PIM implementations that “do exist”?

◆ Because their authors do not want to share them ☹️

◆ <http://nes.fit.vutbr.cz/ansa>